

SUMMIT ENGINEERING



2023

Introduction to today's meeting



- **Welcome to Summit**
- **The overriding principles here at Summit are;**
- **“Honesty, Integrity and Equality”**
- **We strive to maintain these principles throughout all aspects of our operations and in a spirit of openness.**
- **We practice what we preach and expect the same from our customers, suppliers and service providers.**
- **We trust today’s presentation will give you an insight into who we are, what we do, where we are going and how we are we are going to get there!!!**

Company Information

Frankham Bros Ltd was formed in 1955 by the Frankham family it trades as Summit Engineering. Since its outset it has provided manufactured parts and components into the engineering sector. It was bought out by the Threesixty Investment Group in December 2020. Summit's Management team have significant Investments in the company.

With over 70 years experience and a highly trained, skilled workforce we offer a wide range of engineering solutions across a varied range of industrial sectors.

Summit Engineering offers “High Quality” machined and fabricated products, these products must be delivered on time and supplied to our customers exact specifications.

Note the use of the phrase “High Quality ” it is the critical factor behind our longevity and our current and future success.

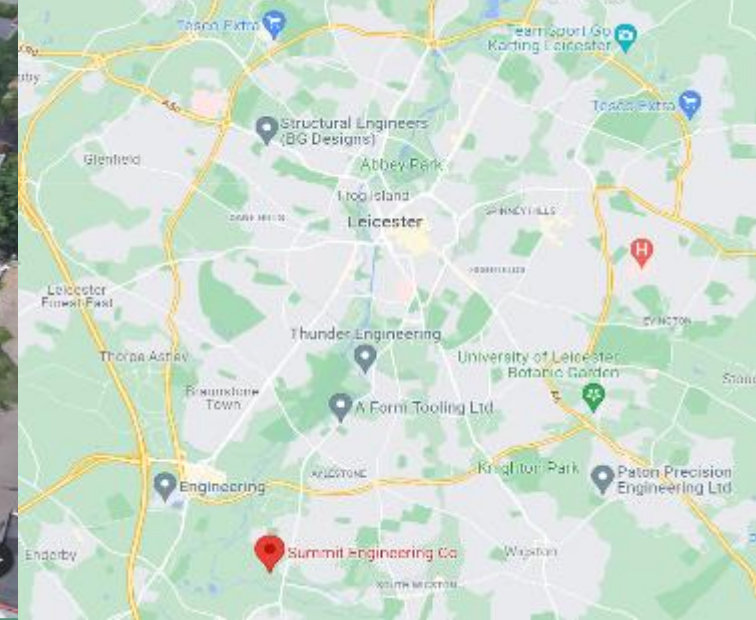


Laser shop / steel stores

**New Logistics Centre
(October 2022)**

Offices /Machining centre

Fabrication & Welding Centre



Location and facilities

Situated in Leicestershire with easy access to the M1 and M69 motorways.

Our facilities consist of four main areas covering 2.5 hectares and we have approx.6,000 m²of production space.



What is our Vision?



- Summit wants to grow!
- Summit wants to grow profitably!
- Summit wants its team to be proud of its growth!
- Summit wants to set clear transparent, achievable goals!
- Summit wants its staff to share in its success!
- Most of all Summit wants satisfied customers!



Bureau Veritas Certification

FRANKHAM BROS LIMITED TRADING AS SUMMIT ENGINEERING

WHARF WAY, GLEN PARVA, LEICESTER, LEICESTERSHIRE, LE2 9TF, UNITED KINGDOM

Bureau Veritas Certification Holding SAS – UK Branch certifies that the Management System of the above organisation has been audited and found to be in accordance with the requirements of the management system standards detailed below

ISO 9001:2015

Scope of certification

PRECISION MACHINISTS, FABRICATIONS, AND MANUFACTURERS OF HEAT EXCHANGERS WITH 8.3 DESIGN AND DEVELOPMENT OF PRODUCTS AND SERVICES DETERMINED AS NOT APPLICABLE.

Original cycle start date:	22-03-2013	
Expiry Date of Previous Cycle:	NA	
Certification / Recertification Audit date:	NA	
Certification / Recertification cycle start date:	18-02-2022	
Subject to the continued satisfactory operation of the organization's Management System, this certificate expires on:	21-03-2025	
Certificate No.: UK012869	Version: 1	Issue Date: 18-02-2022



0008

Certification Body Address: 5th Floor, 66 Prescot Street, London, E1 8HG, United Kingdom

Local Office: 5th Floor, 66 Prescot Street, London, E1 8HG, United Kingdom

Further clarifications regarding the scope and validity of this certificate, and the applicability of the management system requirements, please call: +44 (0) 207 550 8998



ISO 9001:2015 Bureau Veritas Accreditation since 2001

Scope of supply

- For many years we have been servicing various industrial sectors mainly yellow goods but also agriculture, mining and general engineering.
- As well as the UK, products are shipped worldwide to Brazil, USA, Europe and Australia.
- We specialise in close tolerance manufacturing, to rigorous standards, delivering on time to specification.



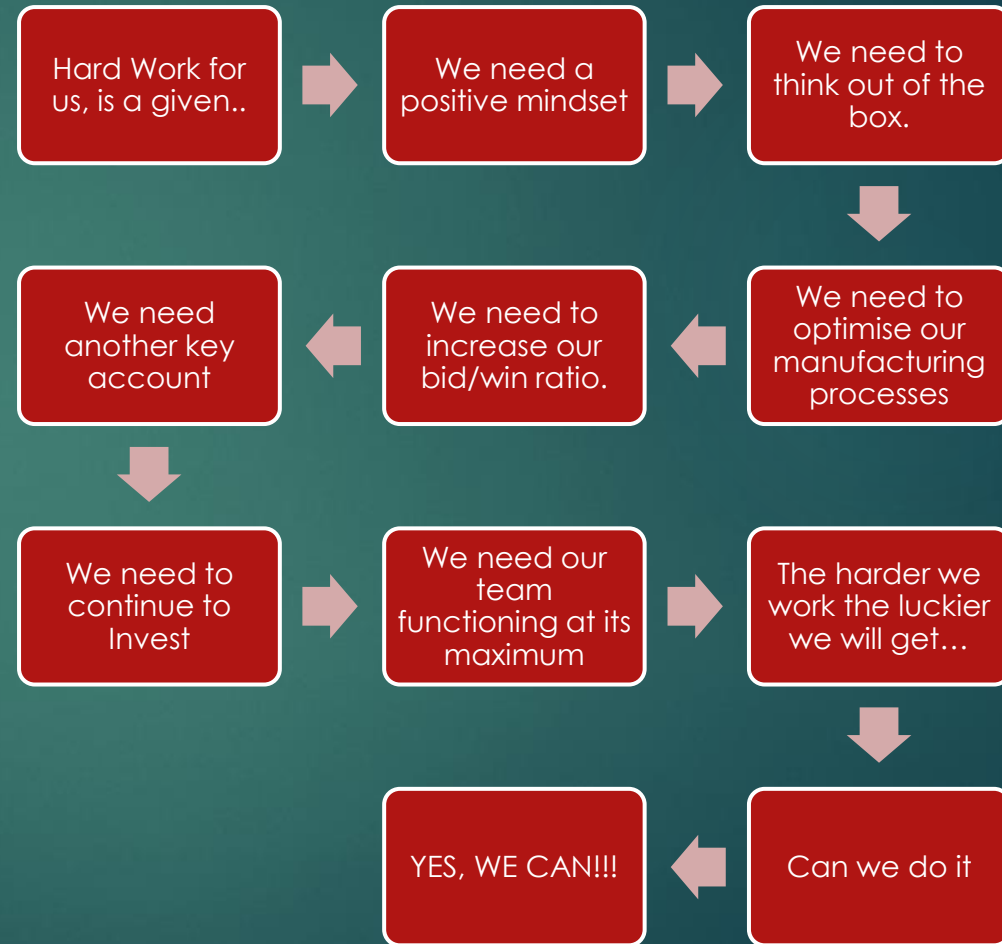
BELLE
LIGHT
CONSTRUCTION
EQUIPMENT



ALSTOM



How are
we going
to achieve
our sales
target in
2023?





Personnel

Over 75 highly skilled staff including:

- Engineers
- Draughtsman
- Logistics Specialists
- Laser Specialists
- CNC Specialists
- Welders
- Press Brake Operators
- Quality Control Inspectors
- Machinists
- Fabricators
- Fitters



Management Directives

- a. **Clear direction & strategy**
- b. **Open & honest communication**
- c. **Ability to motivate**
- d. **Guidance & support**
- e. **Mutual accountability**
- f. **Shared common goals**
- g. **Ability to evaluate different ideas**
- h. **Mutual respect**
- i. **Capability to express gratitude**
- j. **Passion and creativity**
- k. **Positive outlook**



Team expectations

1. **Energy**
2. **Flexibility**
3. **Integrity**
4. **Positivity**
5. **Open and honest communication**
6. **A strong work ethic**
7. **Going above & beyond**
8. **Ability to share skills & knowledge**
9. **Adaptability**
10. **Timely execution of tasks**
11. **Focus on the team more than the win**
12. **Accepting that no job is too small**
13. **Passion**
14. **Belief they are valued**

Customer Facing Advantages

Via our 3D modelling software and years of manufacturing experience, we are able to assist the customer to finalize even the most complex design.

Our team offers a collaborative approach throughout the design phase and is able to recognize and offer cost effective solutions.

We utilise bespoke in-house tooling and JIG creation for consistency of production.

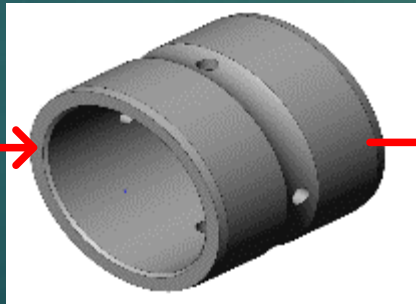
We can provide fully annotated drawings using Solid Works

We offer:

- Prototypes and samples
- Smaller stock/spares production runs
- Production line batches in thousands of units



Interpretation



Design assistance



Manufacture



Quality
control



Dispatch

Typical Process

Key Machines

- Trumpf Laser (TruLaser 3030 3kW Fibre)
- Bystronic Laser (CO² 4.4kW)
- Spot Welders
- Nut Welders
- 8 x Panasonic Robot Welders (2 x New in 2021)
- Robotic self-loading CNC's
- Multiple vertical milling machines
- New HAAS VF-6/40
- 2 x Trumpf press brake folders



Advancements



2020 saw Summit taken over by the 360-investment group it retained the Summit Engineering trading name.

The head count upon close of the deal was 48, today its 70+.

In 2021 it purchased 2 x Panasonic Robot Welders

In 2022 it purchased a Haas VF6

In 2023 it will carry out further investment

|



Investments



New Logistics Centre

Thanks to the investments made, we have created the base to not only operate in the Construction sector but now also into the Agricultural sector. In doing so we have invested in a new 1500m² distribution centre to accommodate our extra demand. We now ship thousands of products each wrapped and packed by our own specialists teams and delivered by our dedicated drivers.



Our investment in people

Over the last 12 months we have invested a considerable amount of time and money on additional staff training



RESULTS

- Higher Staff Retention
- Increased Throughput
- Less Skill Shortages
- Increased Capacity
- Contented Workforce
- Higher Credibility levels
- Perceived as a positive & fair minded employer
- Enhanced Reputation



Two of our younger members of staff attended a course at Haas to learn programming of not only the new HAAS VF6 machining centre but also programming with next generation controls and systems



Both of our apprentices completed EAL Level 2 Diploma in Engineering Operations Knowledge and Skills





We have 2 Fire Marshals and 6 First Aiders

19 Forklift Drivers and 25 Crane Operators



Paycare

We have enrolled all of employees into the Paycare scheme. This enables them to claim for dental work, optical care, health screening and much more.

SUMMIT ENGINEERING

Welcome | £ Make a claim | Wellbeing services | Partners | My account

MyPocketGP
Allowing you to easily access to GP services such as consultations and prescriptions any time, any where.
[Call 0345 222 5749](#)
[Open the app](#)

Counselling and Helpline Service
Our confidential telephone counselling and helpline service offers professional, impartial support when you need it.
[Call 0800 028 6878](#)
[Learn more](#)

Paycare Perks
A discount portal that can save you hundreds of £s on high street, leisure, and health and fitness products.
[Access portal](#)

Online Health Assessment
Discover how healthy you currently are and get an automatic plan to improve your health and wellbeing. Take the "How Are You" quiz from ONE YOU, a free service from the NHS.
[Take the quiz](#)

[Back to the main website](#) [Logout](#)

Welcome | £ Make a claim | Wellbeing services | Partners | My account

My details | **My plan** | Bank details | Update password

Your plan is:
Additions 0119 with P/A Level 1

Your annual claim allowances are:

Optical	£60
Dental	£60
Health Screening	£80
Professional Therapy	£160
Specialist Consultation and Tests	£200
Chiropractic	£30

[Additions Policy documents](#)



We also have an introduction scheme

If an employee recommends a friend and they complete 3 months, they receive £200

Product Showcase



SUMMIT
ENGINEERING



THANK YOU FOR WATCHING